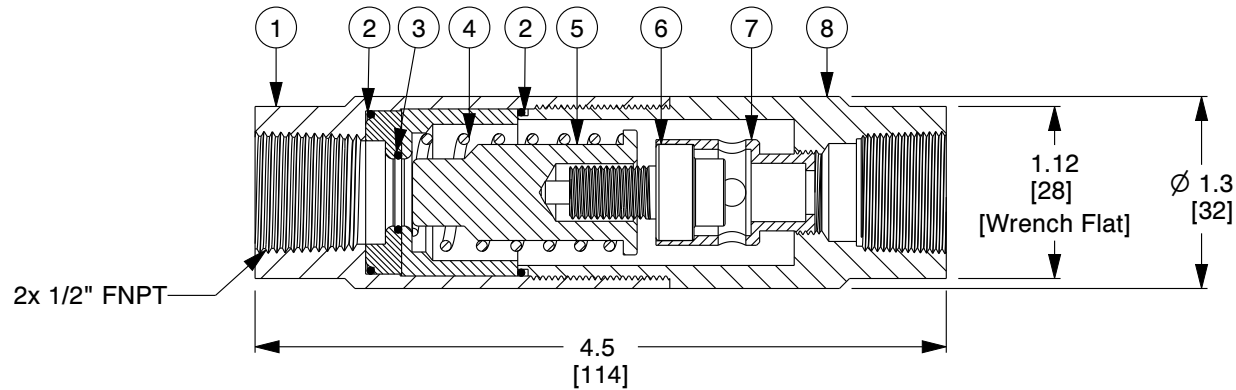




ITEM	DESCRIPTION	MATERIAL
1	BODY - HALF	300 Series SS
2	BODY SEAL (QTY 2)	EPDM or Viton (Refer Note 6)
3	SEAT RING SEAL	PTFE
4	OPERATING SPRING	300 Series SS
5	RAM-TYPE PLUG	300 Series SS
6	THERMAL ACTUATOR	300 Series SS
7	ACTUATOR CARRIER	300 Series SS
8	BODY - HALF	300 Series SS

STANDARD FLOW →



**NOTES:**

1. Cv: 1.3.
2. PORT SIZE: C
3. WEIGHT: 0.9Lb (0.4Kg).
4. MAXIMUM OPERATING PRESSURE: 300 PSIG (20.7 BAR).
5. MAXIMUM TEMPERATURE: 150°F (66°C) OVER SET-POINT LIMIT 300°F (149°C).
6. SEAL MATERIAL COMPATIBILITY:
  - A. EPDM - AIR, GLYCOL, WATER, STEAM, KETONES, AND SYNTHETIC HYDRAULIC OILS.
  - B. VITON - AIR, FUEL, OIL, GAS, PETROLEUM-BASED HYDRAULIC OILS.
  - C. KALREZ.
  - D. SILICONE.
7. FULL OPEN TEMPERATURES "XXX" AVAILABLE: 040°F, 050°F, 055°F, 060°F, 065°F, 075°F, 085°F, 090°F, 095°F, 100°F, 105°F, 110°F, 120°F, 125°F, 130°F, 140°F, 150°F, 155°F, 160°F, 170°F, 180°F, 190°F AND 200°F.
  - A. CLOSING TEMPERATURE IS TYPICALLY 10°F ABOVE OPENING TEMPERATURE.
8. REPLACE SINGULAR "X" WITH 1 FOR EPDM BODY SEALS; 2 FOR VITON BODY SEALS. OTHER OPTIONS AVAILABLE, CONSULT OUR ENGINEERS.
9. FOR OPTIONAL LEAK PORT, CONSULT SALES DEPARTMENT.
10. A #20 MESH STRAINER IS RECOMMENDED.

<b>COMPONENT</b>	<b>IN-LINE TEMPERATURE CONTROL VALVE</b>
------------------	--

  
 ThermOmegaTech, Inc.  
 353 Ivyland Road  
 Warminster, PA 18974-2205, USA  
 Ph: 215-798-5978

This file and any associated information and specifications are provided for reference and evaluation purposes only, and is subject to change without notice. ThermOmegaTech makes no representations, warranties or guarantees as to the appropriateness, accuracy, completeness, or suitability for any purpose, of the file, information or specifications. You are solely responsible for the use of the file, information or specifications.

This drawing is the property of ThermOmegaTech. It contains confidential, proprietary information that is ThermOmegaTech property. Do not disclose to or duplicate for others except as authorized by ThermOmegaTech.

SCALE      NTS

**134-312X00-XXX**

1/2" HAT C-Port, all SS

<b>UNIT</b>
INCH [MM]
<b>SHEET</b>
1 of 1