

4

3

2

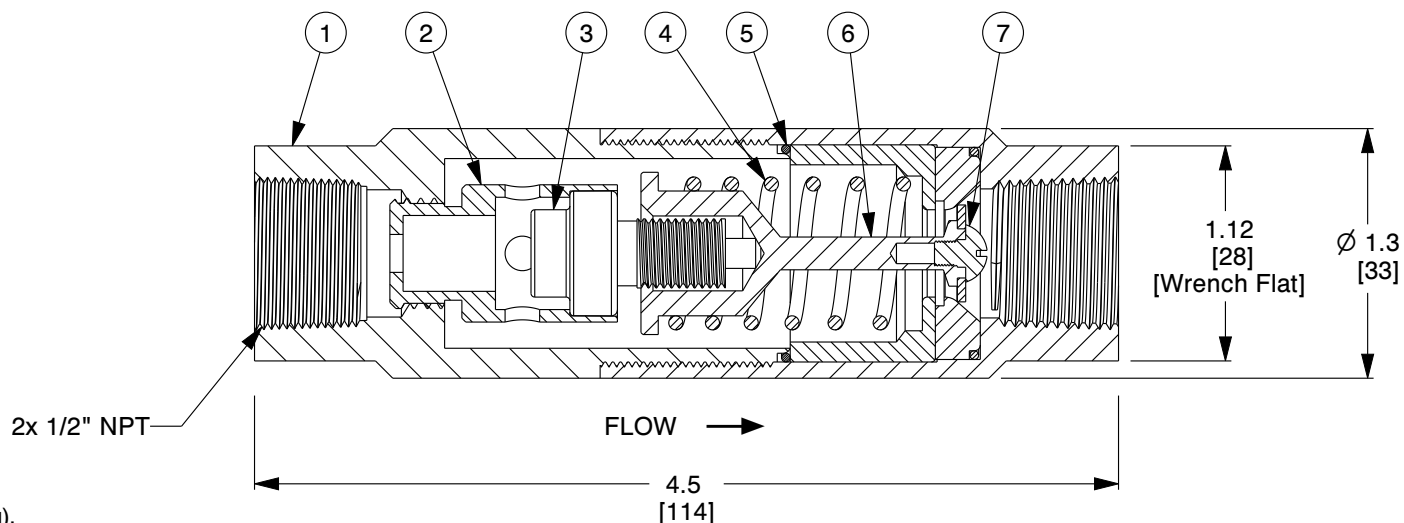
1



ITEM	DESCRIPTION	MATERIAL
1	BODY	300 Series SS
2	ACTUATOR CARRIER	Brass
3	THERMAL ACTUATOR	Brass
4	OPERATING SPRING	300 Series SS
5	BODY SEAL	EPDM or Viton (Refer Note 8)
6	PLUG	300 Series SS
7	LP WASHER	300 Series SS

B

B

**NOTES:**

1. Cv: 1.1.
2. PORT SIZE: B.
3. WEIGHT: 0.9 Lb (0.4 Kg).
4. MAXIMUM OPERATING PRESSURE: 200 PSIG (13.8 BAR).
5. MAXIMUM TEMPERATURE: 150°F (66°C) OVER SET-POINT-LIMIT 300°F (149°C).
6. ALL 144 SERIES LEAK FLOW RATES AT 60 PSIG (4.1 BAR).
7. FULL OPEN TEMPERATURES "XXX" AVAILABLE: 040°F, 045°F, 050°F, 060°F, 070°F, 075°F, 085°F, 095°F, 100°F, 105°F, 110°F, 115°F, 120°F, 125°F, 130°F, 140°F, 150°F, 160°F, 170°F, 175°F, 180°F, 190°F, 200°F AND 210°F.
A. CLOSING TEMPERATURE IS 10°F BELOW OPENING TEMPERATURE.
8. SEAL MATERIAL COMPATIBILITY:
A. EPDM - AIR, WATER, STEAM, KETONES, SYNTHETIC HYDRAULIC OILS.
B. VITON - AIR, FUEL, OIL, GAS, PETROLEUM-BASED HYDRAULIC OILS.
9. REPLACE SINGULAR "X" WITH 1 FOR EPDM BODY SEALS; 2 FOR VITON BODY SEALS.
10. A #20 MESH STRAINER IS RECOMMENDED.

A

A

COMPONENT	INLINE TEMPERATURE CONTROL VALVES
-----------	-----------------------------------



ThermOmegaTech, Inc.
353 Ivyland Road
Warminster, PA 18974-2205, USA
Ph: 215-798-5978

This file and any associated information and specifications are provided for reference and evaluation purposes only, and is subject to change without notice. ThermOmegaTech makes no representations, warranties or guarantees as to the appropriateness, accuracy, completeness, or suitability for any purpose, of the file, information or specifications. You are solely responsible for the use of the file, information or specifications.

This drawing is the property of ThermOmegaTech. It contains confidential, proprietary information that is ThermOmegaTech property. Do not disclose to or duplicate for others except as authorized by ThermOmegaTech.

SCALE

NTS

144-202X02-XXX

1/2" HAT/RA-LP B-Port 1/4 GPM

UNIT

INCH [MM]

SHEET

1 of 1

4

3

2

1