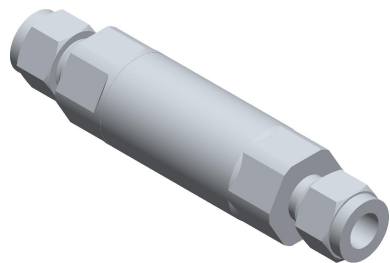


4

3

2

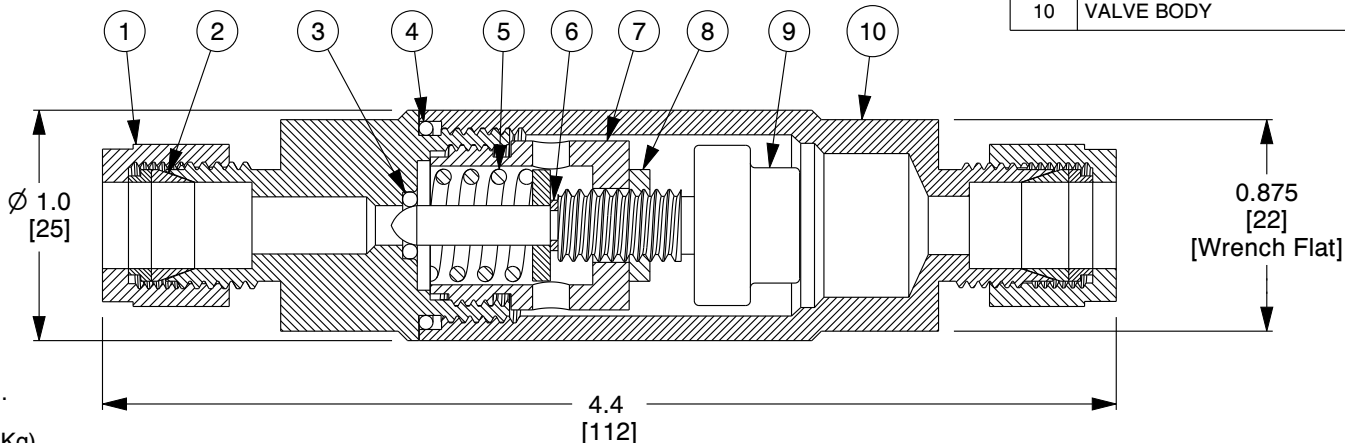
1



ITEM	DESCRIPTION	MATERIAL
1	TUBING NUT	316 SS
2	DOUBLE FERRULE	316 SS
3	SEAT SEAL	PTFE
4	SEALING O-RING	EPDM or Viton (Refer Note 9)
5	OPERATING SPRING	316 SS
6	E-CLIP	PH15-7 MO
7	RETAINER	316 SS
8	LOCK NUT	316 SS
9	THERMAL ACTUATOR	316 SS
10	VALVE BODY	316 SS

B

FLOW →

**NOTES:**

1. TUBE O.D SIZE: 1/4".
2. Cv: 0.5.
3. WEIGHT: 0.5 Lb (0.2 Kg).
4. MAXIMUM OPERATING PRESSURE: 300 PSIG (20.7 BAR).
5. MAXIMUM TEMPERATURE: 150°F (66°C) OVER SET-POINT LIMIT 300°F (149°C).
6. FULL OPEN TEMPERATURES "XXX" AVAILABLE: 040°F, 050°F, 055°F, 060°F, 065°F, 075°F, 085°F, 090°F, 095°F, 100°F, 105°F, 110°F, 120°F, 125°F, 130°F, 140°F, 150°F, 155°F, 160°F, 170°F, 180°F, 190°F AND 200°F.
A. CLOSING TEMPERATURE IS TYPICALLY 10°F ABOVE OPENING TEMPERATURE.
7. FITTINGS: PARKER A-LOK STANDARD / SWAGelok OPTIONAL.
8. REPLACE SINGULAR "X" WITH 0 FOR EPDM BODY SEALS; 1 FOR VITON BODY SEALS.
OTHER SEALS AVAILABLE.
9. SEAL MATERIAL COMPATIBILITY:
A. EPDM - AIR, WATER, STEAM, KETONES, AND SYNTHETIC HYDRAULIC OILS.
B. VITON - AIR, FUEL, OIL, GAS, PETROLEUM-BASED HYDRAULIC OILS.
10. FLOW DIRECTION IS REVERSED ON VALVES THAT CLOSE OVER 210°F (98.9°C).
11. A #20 MESH STRAINER IS RECOMMENDED.

A

A

COMPONENT	IN-LINE TEMPERATURE CONTROL VALVE
-----------	-----------------------------------



ThermOmegaTech, Inc.
353 Ivyland Road
Warminster, PA 18974-2205, USA
Ph: 215-798-5978

This file and any associated information and specifications are provided for reference and evaluation purposes only, and is subject to change without notice. ThermOmegaTech makes no representations, warranties or guarantees as to the appropriateness, accuracy, completeness, or suitability for any purpose, of the file, information or specifications. You are solely responsible for the use of the file, information or specifications.

This drawing is the property of ThermOmegaTech. It contains confidential, proprietary information that is ThermOmegaTech property. Do not disclose to or duplicate for others except as authorized by ThermOmegaTech.

SCALE

NTS

212-201X00-XXX

1/4" TV/HAT-S6

UNIT

INCH [MM]

SHEET

1 of 1

4

3

2

1