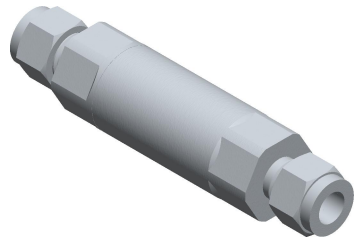


4

3

2

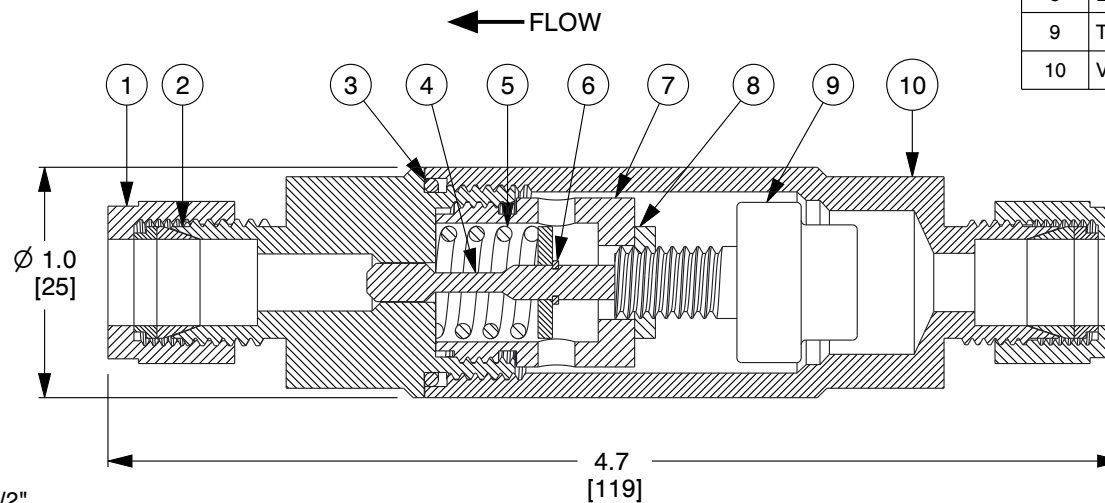
1



ITEM	DESCRIPTION	MATERIAL
1	TUBING NUT	300 Series SS
2	DOUBLE FERRULE	300 Series SS
3	SEALING O-RING	EPDM or Viton (Refer Note 9)
4	RAM-TYPE PLUG	300 Series SS
5	OPERATING SPRING	300 Series SS
6	E-CLIP	PH15-7 MO
7	RETAINER	300 Series SS
8	LOCK NUT	300 Series SS
9	THERMAL ACTUATOR	300 Series SS
10	VALVE BODY	300 Series SS

B

B

**NOTES:**

1. TUBE O.D SIZE: 1/2".
2. Cv: 0.5.
3. WEIGHT: 0.5 Lb (0.2 Kg).
4. MAXIMUM OPERATING PRESSURE: 150 PSIG (10 BAR).
5. MAXIMUM TEMPERATURE: 150°F (66°C) OVER SET-POINT-LIMIT 300°F (149°C).
6. FULL OPEN TEMPERATURE "XXX" AVAILABLE: 040°F, 045°F, 050°F, 060°F, 070°F, 075°F, 085°F, 095°F, 100°F, 105°F, 110°F, 115°F, 120°F, 125°F, 130°F, 140°F, 150°F, 160°F, 170°F, 175°F, 180°F, 190°F, 200°F, AND 210°F.
- A. NOTE: CLOSING TEMPERATURE IS TYPICALLY 10°F BELOW OPENING TEMPERATURE.
7. FITTINGS: PARKER A-LOK STANDARD / SWAGELOK OPTIONAL.
8. REPLACE SINGULAR "X" WITH 0 FOR EPDM BODY SEALS ; 1 FOR VITON BODY SEALS.
9. SEAL MATERIAL COMPATIBILITY:
 - A. EPDM - AIR, WATER, STEAM, KETONES, AND SYNTHETIC HYDRAULIC OILS.
 - B. VITON - AIR, FUEL, OIL, GAS, PETROLEUM-BASED HYDRAULIC OILS.
10. A #20 MESH STRAINER IS RECOMMENDED.

A

A

COMPONENT	IN-LINE TEMPERATURE CONTROL VALVE
-----------	-----------------------------------



ThermOmegaTech, Inc.
353 Ivyland Road
Warminster, PA 18974-2205, USA
Ph: 215-798-5978

This file and any associated information and specifications are provided for reference and evaluation purposes only, and is subject to change without notice. ThermOmegaTech makes no representations, warranties or guarantees as to the appropriateness, accuracy, completeness, or suitability for any purpose, of the file, information or specifications. You are solely responsible for the use of the file, information or specifications.

This drawing is the property of ThermOmegaTech. It contains confidential, proprietary information that is ThermOmegaTech property. Do not disclose to or duplicate for others except as authorized by ThermOmegaTech.

SCALE

NTS

224-112X00-XXX

1/2" TV/HAT-RA-LP-SW 1/4 GPM

UNIT

INCH [MM]

SHEET

1 of 1

4

3

2

1