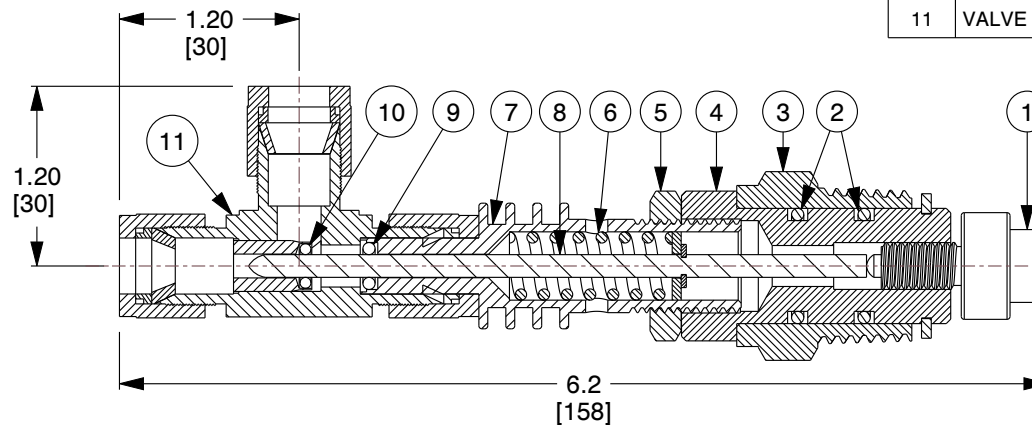
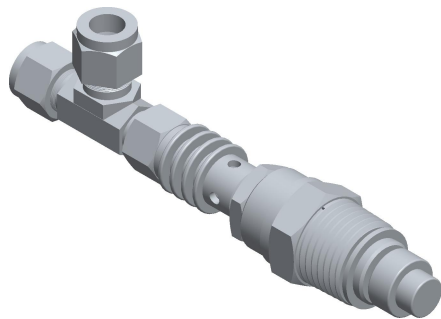


4

3

2

1



ITEM	DESCRIPTION	MATERIAL
1	THERMAL ACTUATOR	300 Series SS
2	BUSHING SEALS	See Note 9
3	BUSHING - 3/4" NPT	300 Series SS
4	ADAPTER	300 Series SS
5	LOCKNUT	300 Series SS
6	OPERATING SPRING	300 Series SS
7	YOKE	300 Series SS
8	PLUG/STEM ASSEMBLY	300 Series SS
9	STEM SEAL	PTFE
10	SEAT SEAL	PTFE
11	VALVE BODY	300 Series SS

NOTES:

1. TUBE O.D SIZE: 3/8".
2. Cv: 0.5.
3. WEIGHT: 0.6 Lb (0.27 Kg).
4. MAXIMUM OPERATING PRESSURE: 200 PSIG (13.8 BAR).
5. MAXIMUM TEMPERATURE VALVE END: 388°F (198°C).
6. MAXIMUM TEMPERATURE SENSING END: 150°F (66°C)
OVER SET-POINT LIMIT 300°F (149°C).
7. FULL OPEN TEMPERATURES "XXX" AVAILABLE:
 - A. X SERIES: 035°F, 040°F, 050°F, 055°F, 060°F, 065°F, 075°F, 085°F, 090°F, 095°F, 100°F, 105°F, 110°F, 120°F, 125°F, 130°F, 140°F, 150°F, 155°F, 160°F, 170°F, 180°F, 190°F, AND 200°F.
 - B. CLOSING TEMPERATURE IS TYPICALLY 10°F ABOVE OPENING TEMPERATURE.
8. OPTIONAL BAND-O-LET TYPE ATTACHMENT FITTING MUST BE SPECIFIED WHEN ORDERING.
9. VITON IS STANDARD, OTHERS ARE AVAILABLE.
10. 0 = PARKER FITTINGS ARE STANDARD. 1 = SWAGelok FITTINGS ARE AVAILABLE.
11. A #20 MESH STRAINER IS RECOMMENDED.

COMPONENT	TEMPERATURE CONTROL VALVE
-----------	---------------------------



ThermOmegaTech, Inc.
353 Ivyland Road
Warminster, PA 18974-2205, USA
Ph: 215-798-5978

This file and any associated information and specifications are provided for reference and evaluation purposes only, and is subject to change without notice. ThermOmegaTech makes no representations, warranties or guarantees as to the appropriateness, accuracy, completeness, or suitability for any purpose, of the file, information or specifications. You are solely responsible for the use of the file, information or specifications.

This drawing is the property of ThermOmegaTech. It contains confidential, proprietary information that is ThermOmegaTech property. Do not disclose to or duplicate for others except as authorized by ThermOmegaTech.

SCALE

NTS

783-0X0000-XXX

3/8" TV/US-X

UNIT

INCH [MM]

SHEET

1 of 1

4

3

2

1